

ACCOMMODATION

Stay in the Wild, explore, create memories

Set in the quietude of nature, KWS offers a modest and wide range of self-catering accommodation options targeting the budget traveler. Whether you are looking to get away from the exhausting grind of life, a break away from the hustle and bustle of the city right into the serenity of bush, or you just long to soak in your senses and reconnect with nature, KWS bandas and guesthouses offer the perfect ambience.

Mt. Elgon National Park offers the following;

KOITOBOS GUEST HOUSE

Accommodation

1 unit, 6 pax - Consists of three bedrooms each with two single beds.

Amenities

Fully furnished sitting/dining area, equipped kitchen with a barbeque area outside. Beddings, towels, toiletries and two bathrooms. Lighting is by electricity. A house caretaker is available.

Rates

Citizens & Residents: **Ksh. 6,000**
Non-Residents: **US\$ 180**



KAPKURO BANDAS



Accommodation

4 units, 3 pax per unit - Consists of one bedroom with one single and one double bed.

Amenities

Kitchenette with a gas cooker, hot showers, beddings, towels and toiletries. Lighting is by electricity. A house care taker is available.

Rates

Citizens & Residents: **Ksh. 3,000**
Non-Residents: **US\$ 40**

SPECIAL CAMPSITE: SALT LICK

For this category, only camping grounds are provided. The visitor has to reserve the campsite well in advance for exclusive use. Visitors are required to bring with them a source of fire and kitchen utensils.

Most of the special campsites are located near rivers in the park unless otherwise indicated.

PUBLIC CAMPSITES

- **CHORLIM**
- **NYATI**
- **RONGAI**
- **MUTAMAYO**

For this category standard amenities are provided; water, toilet / bathroom and kitchen area.

Public campsites do not require prior booking.

- Reservation of bandas / guesthouses is done through the park warden or through KWS headquarters reservations desk; reservations@kws.go.ke
- Prevailing camping rates apply per person per day for both special and public campsites including other park charges.



PARK FEES

	Citizen	Residents	Non-Residents
	KSH	KSH	USD\$
Adult	250	250	20
Child/Student	100	100	10

Pay for your entry to any of our Parks or Reserves via:



SPECIAL SERVICES/ACTIVITIES

Security/Guided tour per guide:

- Ksh. 1,720 – up to 4 hours
- Ksh. 3,015 – Over 4 hours






Community guided tours:

- a) Lower circuit Ksh. 1,500/guide
- b) Upper circuit Ksh. 3,000/guide

SPECIAL VEHICLE HIRE

- a) Kitale to end-road and back **KSh.15,000**
- b) Kitale lower circuit and back **KSh.12,000**
- c) Chorlim gate to end-road and back **KSh. 12,000**
- d) Chorlim gate lower circuit and back **KSh. 10,000**

VEHICLE CHARGES PER DAY

 Less than 6 Seats 300/=	 6-12 Seats 1,030/=	 13-24 Seats 2,585/=
 25-44 Seats 4,050/=	 45 Seats and above 5,000/=	



MT. ELGON NATIONAL PARK



Untamed wilderness, Secluded splendor

INTRODUCTION

Towering about 4222Meters high, covered in mist and drizzle Mt. Elgon is a soaring volcanic giant. It's a sight to behold! The lush montane forest is thick and evergreen on the floor, but as you hike up, the foliage changes and the best place to see the lush montane forest is on the Chelulus circuit of the park. Mixed bamboo and Podocapus is the next forest zone that is a common feature on the mountain.

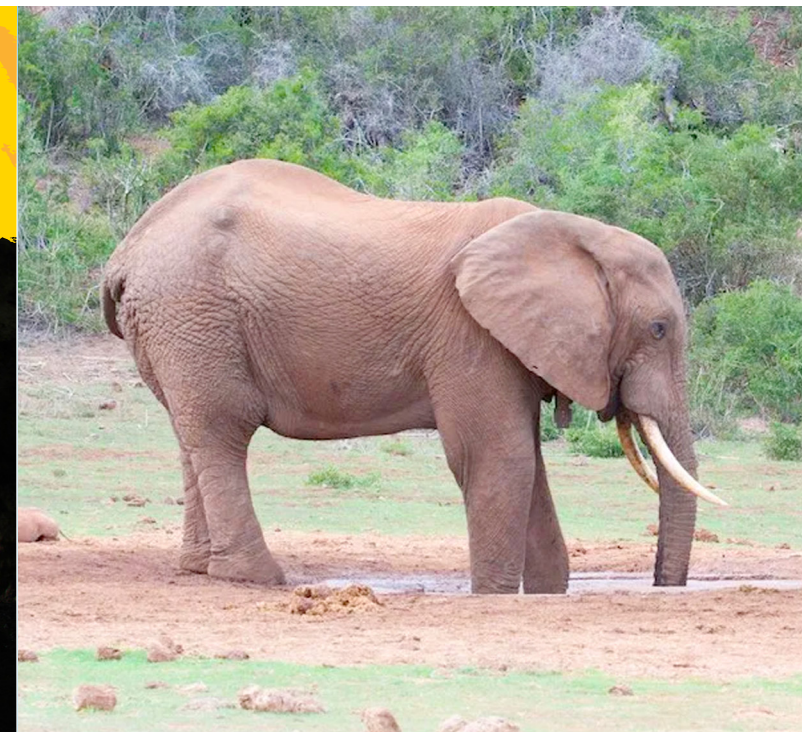
The heath zone is characterized by dense scrub and wildflowers. The alpine moorland zone boasts of the highest number of endemic plants species on the mountain while the open moorland grassland is dotted with clusters of giant groundsel and lobelia plants that are unique to East Africa.

KEY ATTRACTIONS & ACTIVITIES



The salt-mining elephants of Kitum Cave are definitely a spectacle. Tonnes of elephants, dubbed 'the troglodyte tuskers' stream down the cave to dig out salt elements from the ground. The park boasts of caves formed from ancient lava tubes namely Kitum, Making'eny, Chepnyalil, Ngwarisha and Kiptoro. Cave exploration and excursions in the bat infested caves are common with outdoor junkies that love the thrill of being in the wilderness.

Making'eny cave, located about 1.5km from the Kitum caves has a spectacular waterfall over its mouth. A hike up is refreshing and the views breathtaking.



The park has two internationally recognized designations; Important Bird Area (IBA) and UNESCO Man and Biosphere (MAB) sites.

Mt. Elgon offers great opportunities for hiking to Endebess Bluff and Koitoboss peak, Picnicking and Cave exploration, Primate and Bird watching, Cross border tourism, Horse riding, Botanical diversity, Spectacular waterfalls and beautiful picnic sites, Photography and Self-guided walking tours at nature trails and Hot springs at the border of Kenya and Uganda.

WHAT TO TAKE WITH YOU

Whether camping or just visiting for a day trip, visitors are advised to carry with them the following; personal effects, drinking water, food, camping equipment if the visitor intends to stay overnight.

Also important are; Camera, binoculars, sunscreen, insect repellent, first aid kit, sunglasses, appropriate hiking/mountaineering gear and reserve car fuel if intending to be in the park longer.



HOW TO GET THERE



By Air: Visitors can fly to Eldoret airport (70 KM away). Kitale airstrip, located 10km outside Kitale town on the main Kitale-Bungoma road, is 30 km from the park.

By Road: From Nairobi, drive to Kitale town and from here is a well signposted murrum (dirt) Endebess road to Mt. Elgon Lodge and Chorlim gate. Chorlim gate is the main gate which also leads to the park headquarters.



PARK RULES

Adhere to Park entry and exit times. Unless you are an overnight visitor, always exit the park before dusk. Park gates open at 6:00 am and close at 6:00 pm.

1

General rules of the road apply. Car hooting and driving under the influence of alcohol is strictly prohibited.



Move slowly and quietly but remember all animals are wild and can react dangerously if startled.

3



All KWS parks, reserves and sanctuaries are **SINGLE USE PLASTIC FREE ZONES.**

MT. ELGON NATIONAL PARK

Park Contact: (020)3539903 • Toll Free Number: 0800597000

Email: menp@swiftkenya.com or elgonnp@kws.go.ke

[f Kenya Wildlife Service](#) [@kwskenya](#) [kenyawildlifeservice](#) [kws.go.ke](#)