

PARK RULES

Adhere to Park entry and exit times. Unless you are an overnight visitor, always exit the park before dusk. Park gates open at 6:00 am and close at 6:00 pm.

1

General rules of the road apply. Car hooting and driving under the influence of alcohol is strictly prohibited.



Move slowly and quietly but remember all animals are wild and can react dangerously if startled.

3



All KWS parks, reserves and sanctuaries are **SINGLE USE PLASTIC FREE ZONES**.

NAIROBI NATIONAL PARK

Park Contact: 020)2618763 / (020)2379407

Toll Free Number: 0800597000 Email: nnp@kws.go.ke

Kenya Wildlife Service @kwskenya kenyawildlifeservice kws.go.ke

PARK FEES

	Citizen	Residents	Non-Residents
	KSH	KSH	USD\$
Adult	400	400	35
Child/Student	200	200	20

Pay for your entry to any of our Parks or Reserves via:



SPECIAL SERVICES/ACTIVITIES

Security/Guided tour per guide:

- Ksh. 1,720 – up to 4 hours
- Ksh. 3,015 – Over 4 hours

Hire of VIP Van:

- Ksh. 7,000 – Up to 2 and a half hours

VEHICLE CHARGES PER DAY



Less than 6 Seats
300/=



6-12 Seats
1,030/=



13-24 Seats
2,585/=



25-44 Seats
4,050/=



45 Seats and above
5,000/=

WHAT TO TAKE WITH YOU



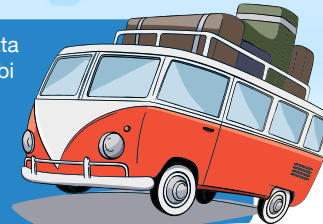
Whether visiting for a day trip or otherwise, visitors are advised to carry with them the following; personal effects and clean drinking water. Also important are;
Camera, binoculars, sunscreen, insect repellent and sunglasses.

HOW TO GET THERE



By Air: Jomo Kenyatta International Airport and Wilson Airport

By Road: Located along Lang'ata Road about 8km from the Nairobi Central Business District and easily accessible from Nyayo National Stadium through to Lang'ata Road slightly past the Langata Army Barracks.



NAIROBI NATIONAL PARK



The World's only Wildlife Capital

INTRODUCTION

Beyond the towering skyscrapers and the deafening music from the most popular Nairobi's means of commute - *matatus* or *mathrees* as they are locally known, lies a haven of peace and tranquility.

About 10Km drive out of Nairobi Central Business District is Nairobi National Park, the world's only wildlife capital that plays host to a wide variety of wildlife, birdlife and the best scenic views from the park and beyond. The park is a popular outing space for families, couples and organized groups.



KEY ATTRACTIONS & ACTIVITIES

A great game viewing experience awaits wildlife lovers against the city backdrop. Common animal species include – Giraffe, leopard, zebra, buffalo, antelope, lion, black and white rhino, hippo, and crocodile. The park is a thriving rhino sanctuary and is one of Kenya's most successful rhino sanctuaries.



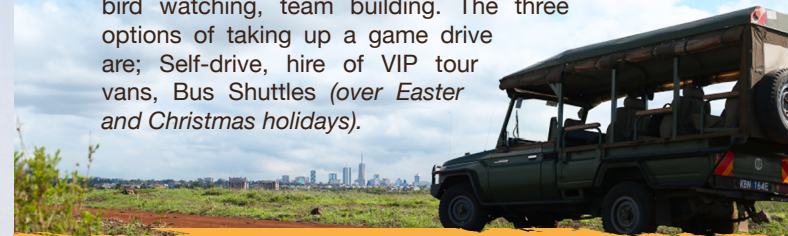
The park's exceptional birdlife records a remarkable over 400 species whose numbers tend to swell up between March and May when a host of European migrants make the park their home.



Picnic and event sites that include Impala observation point, Ivory burning site, Kingfisher picnic site, the club house and Mokoyiet picnic site offer perfect grounds for weddings, bush dinners, team building, corporate events and picnic outings.



Endless activity options that visitors can indulge in include: Scenic and game viewing, picnicking, bird watching, team building. The three options of taking up a game drive are; Self-drive, hire of VIP tour vans, Bus Shuttles (*over Easter and Christmas holidays*).



NB: For more information on hire of VIP tour van services contact the park warden.

ACCOMMODATION

Stay in the Wild, explore, create memories

While there are no KWS bandas and guest houses nor campsites in Nairobi National Park, visitors can put up in the privately run accommodation options located just at the border of the park. These include;

- **Ololo Safari Lodge**
- **Nairobi Tented Camp**
- **Emakoko Lodge**

A wide array of accommodation is also available in Nairobi metropolitan and its environs.

